



Apache Energy Limited (Apache), on behalf of the Van Gogh joint venture participants, is proposing to develop an oilfield, known as Van Gogh, off the Exmouth coast.

This is the first in a series of community newsletters designed to provide up-to-date information about the progress of the proposed development to ensure that stakeholders are well informed about up-coming activity.

Theo-2/3H wells

From early May to early June, two appraisal wells known as Theo-2 and Theo-3H, will be drilled to confirm the extent of the Van Gogh oilfield. Production testing will take place for two days at the end of drilling (end May/early June), resulting in flaring. The flare may be visible from the mainland, especially at night, but is no cause for concern.

While the drill rig is in location, a 500 metre safety zone will be gazetted around it and access within this zone by other vessels is not permitted.

Approval to drill the wells has been obtained from the Department of Industry and Resources (DoIR). A copy of the Environmental Plan (EP) is available upon request or a summary can be viewed at the DoIR website at www.doir.wa.gov.au/environment.

Van Gogh wells

The Van Gogh production drilling campaign is expected to start in July 2007 and continue for about 12 months. Two drill centres (DC1 and DC2) will be used to drill ten production wells in the field. The wells are located approximately 35 km to the north of the Muiron Islands Marine Management Area, and 45 km north of the Ningaloo Reef, in water depths ranging between 360 m and 370 m.

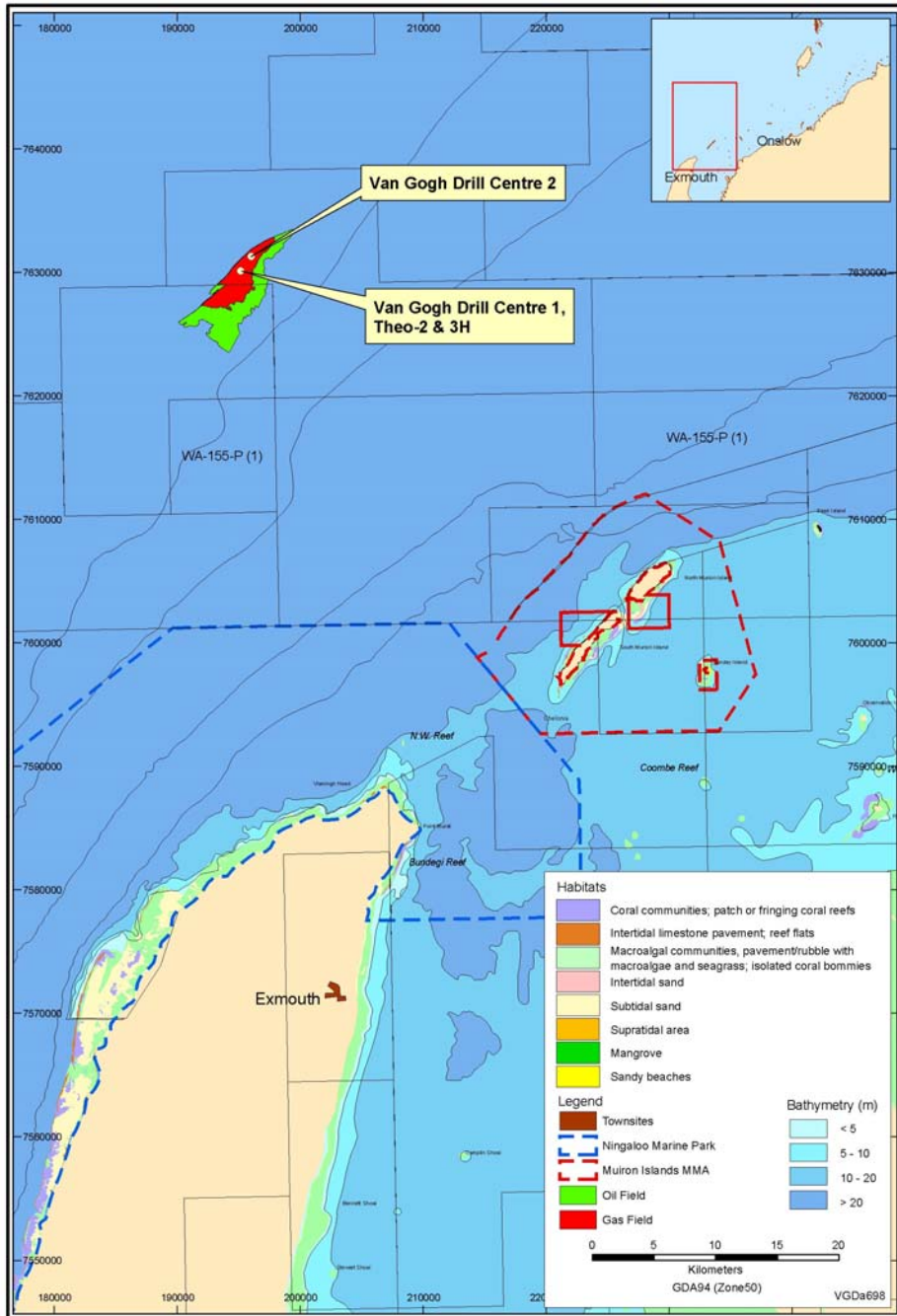
The location of the Van Gogh wells is illustrated on the map overpage. The Van Gogh drilling EP will be submitted to the DoIR for approval before any activity commences.

Drill Rig and Support Vessels

The wells will be drilled by the 'Stena Clyde' semi-submersible rig, towed into position by two support vessels – the Pacific Frontier and Pacific Ariki – which will operate between the rig and the Port of Dampier. The Stena Clyde will be held in position by eight anchors extending 1,500 m from the rig. Crew changes will be undertaken by helicopter to and from Learmonth Airport.

Drilling Operations and Discharges

During drilling, discharges from the rig such as cooling water and drill cuttings (sediment from the drilling of the well) and mud (used to cool the drill bit and return the cuttings to the surface) are normal. The discharges are approved and managed under the EP.



More Information

For more information about Apache's activities in the region, please contact:

Myles Hyams Environment Manager Telephone: 08-9422 7421	Caroline de Mori Public Affairs Manager Telephone: 0418 919 064
Email: vangogh.scg@aus.apachecorp.com	
www.apachevangogh.com.au	www.apachecorp.com
Apache Energy Limited Level 3, 256 St Georges Tce, Perth, WA 6000 PO Box 477, West Perth, WA 6872 Telephone: 08-9422 7421	